



# NVL Polyclonal Antibody

<b>Catalog No</b>	YP-Ab-16784
<b>Isotype</b>	IgG
<b>Reactivity</b>	Human;Mouse;Rat
<b>Applications</b>	WB;ELISA
<b>Gene Name</b>	NVL
<b>Protein Name</b>	Nuclear valosin-containing protein-like
<b>Immunogen</b>	Synthesized peptide derived from NVL . at AA range: 320-400
<b>Specificity</b>	NVL Polyclonal Antibody detects endogenous levels of NVL protein.
<b>Formulation</b>	Liquid in PBS containing 50% glycerol, 0.5% BSA and 0.02% sodium azide.
<b>Source</b>	Polyclonal, Rabbit,IgG
<b>Purification</b>	The antibody was affinity-purified from rabbit antiserum by affinity-chromatography using epitope-specific immunogen.
<b>Dilution</b>	Western Blot: 1/500 - 1/2000. ELISA: 1/20000. Not yet tested in other applications.
<b>Concentration</b>	1 mg/ml
<b>Purity</b>	≥90%
<b>Storage Stability</b>	-20°C/1 year
<b>Synonyms</b>	NVL; Nuclear valosin-containing protein-like; NVLp; Nuclear VCP-like protein
<b>Observed Band</b>	95kD
<b>Cell Pathway</b>	[Isoform 2]: Nucleus, nucleoplasm .; [Isoform 1]: Nucleus, nucleolus . Nucleus, nucleoplasm . Expressed predominantly in the nucleolus. Associates with pre-ribosomal particles in the nucleus. .
<b>Tissue Specificity</b>	Widely expressed. Highest level of expression in heart, placenta, skeletal muscle, pancreas and retina.
<b>Function</b>	PTM:Phosphorylated.,similarity:Belongs to the AAA ATPase family.,tissue specificity:Widely expressed. Highest level of expression in heart, placenta, skeletal muscle, pancreas and retina.,
<b>Background</b>	This gene encodes a member of the AAA (ATPases associated with diverse cellular activities) superfamily. Multiple transcript variants encoding different isoforms have been found for this gene. Two encoded proteins, described as major and minor isoforms, have been localized to distinct regions of the nucleus. The largest encoded protein (major isoform) has been localized to the nucleolus and shown to participate in ribosome biosynthesis (PMID: 15469983, 16782053), while the minor isoform has been localized to the nucleoplasm. [provided by RefSeq, Aug 2011],



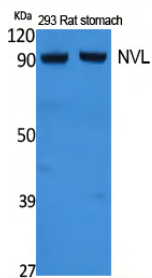
**matters needing attention**

Avoid repeated freezing and thawing!

**Usage suggestions**

This product can be used in immunological reaction related experiments. For more information, please consult technical personnel.

## Products Images



Western Blot analysis of extracts from rat stomach, 293 cells, using NVL Polyclonal Antibody. Secondary antibody(catalog#:RS0002) was diluted at 1:20000 cells nucleus extracted by Minute TM Cytoplasmic and Nuclear Fractionation kit (SC-003, Inventbiotech, MN, USA).